

ARTISTICA
— HOME —





ARTISTICA

— HOME —

Welcome to Volume II of the Artistica Home portfolio, showcasing extraordinary silhouettes in our new Signature Designs assortment.

Volume I of the portfolio offered three categories of product – The Cohesion Finish Program, the Metal Designs Program and a compendium of designs noted simply as Artistica Home. Our passion for original design and the innovative use of natural materials has guided us toward the proposition of creating a third program for the portfolio, which we call Signature Designs. Volume II is devoted exclusively to that product category, and we couldn't be more excited to unveil it.

The guiding principal behind Artistica Home is that design is an art form, and that home furnishings represent an opportunity for each of us to make a personal statement of style. Our portfolio features unique original designs, as well as silhouettes whose inspiration is found in classic historical references. We believe that we have a responsibility to curate the legacy that existed before us, while enhancing its modern appeal through exotic materials and breakthrough techniques that exist today.

It's an exciting time for interior design. We are delighted to bring you Volume II of the Artistica Home portfolio in hopes that it inspires personal self-expression in your home, just as elegantly as an artist expresses themselves on canvas. Enjoy!



SIGNATURE DESIGNS

An eclectic mix of striking original designs for every room of the home, many utilizing a range of unusual and exotic materials.

Including:

- Dining Tables
- Spot Tables
- Chairs & Stools
- Media Consoles
- Occasional

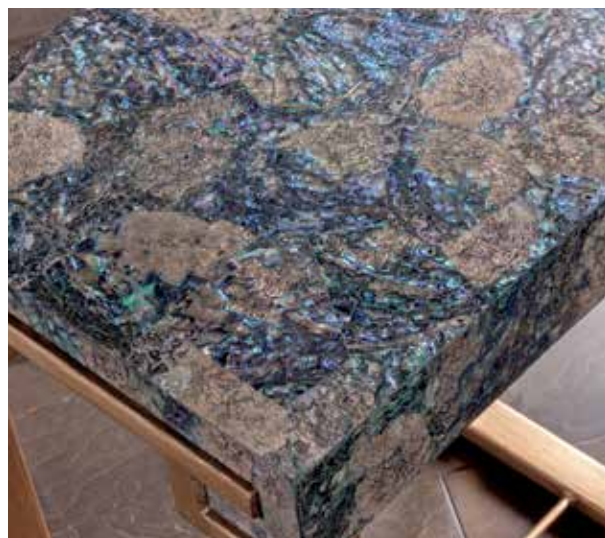
SIGNATURE DESIGNS

A wide range of original designs for every room of the home, featuring mixed media and stunning unique finishes

SIGNATURE DESIGNS - TABLE OF CONTENTS

Product listing by category

Unusual and sometimes rare materials are utilized in this collection to achieve our unique designs. For additional information about specific materials, please see pages 254-255 of our Volume I catalog before ordering.



DINING ROOM AND STOOLS 7-31

2101	ARNE	28
2102	VIGGO	30
2014	BEALE	24
2105	ARTURO	8
2146	RILEY WOVEN	11
2147	MIRANDA	22
2155	CAPIZ	20
2158	HELLER	14
2161	RAINER	18

OCCASIONAL TABLES 33-79

2024	CUMULUS	53
2111	SANGIOVESE STAINLESS/GT	34
2112	SANGIOVESE STAINLESS/MT	38
2117	CHIAVARI	74
2126	THATCH	68
2128	SOIREE	40
2129	CORTONA	70
2132	CIRRO	59
2135	TOPA	64
2145	ARISTO	54
2154	ALFIE	62
2155	CAPIZ	46
2156	CUMULUS CAPIZ	48
2157	MARLOWE	72
2158	HELLER	58
2160	VOILA	56
2163	INAMORATA	69

MEDIA CREDENZAS AND CHESTS . . . 80-125

2025	MERCURY	83
2093	DOCTRINE	112
2115	FELICITY	108
2116	RIPLEY	120
2118	BUSHIDO	124
2119	GRADIENT	106
2122	PHOEBE	122
2123	MIKO	118
2124	VAN DYCK	116
2140	ZEITGEIST WHITE	90
2141	ZEITGEIST LINEN	98
2149	LOGAN	86
2150	MONSTUART	85

ACCENTS AND SPOT TABLES . . . 126-139

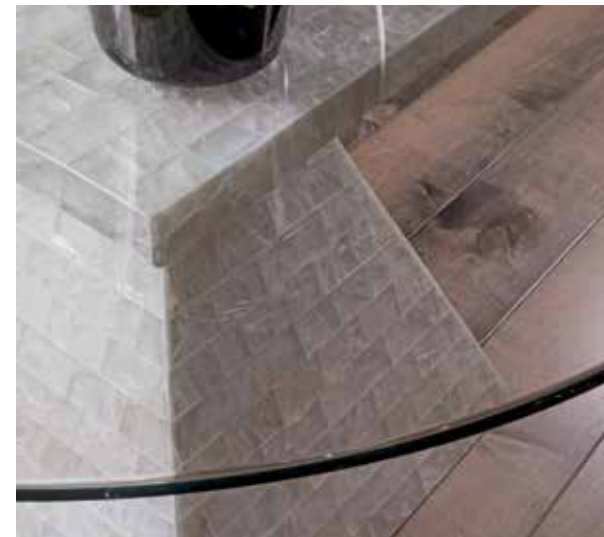
2067	LEO	138
2120	DALLIANCE	128
2121	LILT	130
2125	MONTEZ	132
2127	ISABELLA	134
2133	DEMETRIA	136
2134	ISIDORA	136
2159	OTTO	137
2162	JOPLIN	138
2164	ARDOR	139





DINING ROOM AND STOOLS

SIGNATURE DESIGNS - DINING ROOM AND STOOLS
A range of stunning original designs to enhance the everyday dining experience



Our Volume II dining and stool collections cover a wide range of style categories and are marked by our continued use of unusual materials, textures and finishes.

SIGNATURE DESIGNS - 2105 SERIES/ARTURO

White oak and select hardwoods with quartered oak veneer and woven cane in a white and gray wire-brushed cerused finish



Arturo features original, sleek transitional silhouettes made casual with our white/gray wire brushed ceruse and the application of woven caning to the chair out-backs, all in white oak. The dining table boasts quartered white oak veneers in a book match pattern standing on sturdy legs, while the stately and comfortable chairs boast a linen-like performance fabric with just the slightest chenille pile. Like all Artistica chairs and stools, the Arturo styles are also available in Special Order fabrics, leathers and COM.

SIGNATURE DESIGNS - 2105 SERIES/ARTURO

White oak and select hardwoods with quartered oak veneer and woven cane in a white and gray wire-brushed cerused finish



**2105-877 Arturo
Rectangular Dining Table**
84W x 42D x 30H in.

**2105-880-01
Arturo Side Chair**
22.5W x 29D x 42H in.
Seat 19W x 19D x 19H in.
Standard fabric 223571
Also available in Special Order
fabrics, leathers and COM.



**2105-881-01
Arturo Arm Chair**
23.5W x 29D x 42H in.
Arm 25.5H in.
Seat 19W x 19D x 19H in.
Standard fabric 223571
Also available in Special Order
fabrics, leathers and COM.



SIGNATURE DESIGNS - 2105 SERIES/ARTURO

White oak and select hardwoods with quartered oak veneer and woven cane in a white and gray wire-brushed cerused finish



2105-895-01
Arturo Counter Stool
24W x 27D x 42H in.
Arm 30.5H in.
Seat 21W x 19D x 24H in.
Standard fabric 223571
Also available in Special Order fabrics,
leathers and COM.



2105-896-01
Arturo Barstool
24W x 27D x 48H in.
Arm 36.5H in.
Seat 21W x 19D x 30H in.
Standard fabric 223571
Also available in Special Order fabrics,
leathers and COM.



SIGNATURE DESIGNS - 2146 SERIES/RILEY

Woven outer back and sides in woven cane in a white gray finish, with upholstered inner back and seats with casters



Our most popular and versatile chair design is now available with an outback in woven caning, finished to match the 2105 Arturo series. The Riley's sleek transitional design is apropos in a wide variety of settings, and the smooth casters add comfort and functionality.



2146-881-01
Riley Woven Arm Chair
25W x 26.5D x 38H in.
Arm 25H in.
Seat 19W x 19D x 19H in.
Standard fabric 223571
Also available in Special Order fabrics,
leathers and COM.

SIGNATURE DESIGNS - 2101 SERIES/ARNE

Contemporary designs crafted from mahogany solids in a white wire brushed sandblasted finish with complementing cane in a white finish



2101-898-01
Arne Low Back Barstool
21.5W x 22.5D x 34H in.
Seat 19.75W x 19D x 30H in.
Standard fabric 430371
Also available in Special Order fabrics,
leathers and COM.



SIGNATURE DESIGNS - 2101 SERIES/ARNE

Contemporary designs crafted from mahogany solids in a white wire brushed sandblasted finish with complementing cane in a white finish



2101-896-01
Arne Barstool
25W x 25.5D x 42H in.
Seat 22W x 19D x 30H in.
Standard fabric 430371
Also available in Special Order fabrics,
leathers and COM.



2101-897-01
Arne Low Back Counter Stool
21.5W x 22.5D x 28H in.
Seat 19.75W x 19D x 24H in.
Standard fabric 430371
Also available in Special Order fabrics,
leathers and COM.



2101-895-01
Arne Counter Stool
25W x 25.5D x 36H in.
Seat 22W x 19D x 24H in.
Standard fabric 430371
Also available in Special Order fabrics,
leathers and COM.

SIGNATURE DESIGNS - 2158 SERIES/HELLER

Crafted from Mahogany solids and veneers in a rich white wirebrushed and rubbed, finish, hand casted Scagliola stone bases with polished aluminum insets



Original designs combining Scagliola stone panels hand-poured in a random pattern to imitate clouds, formed over an iron interior structure and offset by applied polished aluminum, and completed with a thick Mahogany slab top in a complex wire brushed finish based on a Swedish antique. Shown here with our Riley arm chairs; please see p. 83 of our Volume I catalog for details. *Scagliola stone dates to the Italian Renaissance and was originally developed as a structural substitute for large architectural forms typically built in marble. It combines selenite and a variety of marble and stone "dusts" to form a strong, beautiful surface. Each piece or top is created by hand by skilled artisans and will vary in appearance from piece to piece.*

SIGNATURE DESIGNS - 2158 SERIES/HELLER

Crafted from Mahogany solids and veneers in a rich white wirebrushed and rubbed, finish, hand casted Scagliola stone bases with polished aluminum insets



2158-877C Heller Rectangular Dining Table
100W x 48D x 30H in.



SIGNATURE DESIGNS - 2158 SERIES/HELLER

Crafted from Mahogany solids and veneers in a rich white wirebrushed and rubbed, finish, hand casted Scagliola stone bases with polished aluminum insets



Original design combining Scagliola stone panels hand-poured in a random pattern to imitate clouds, formed over an iron interior structure and offset by applied polished aluminum. *Each Scagliola piece is created by hand by skilled artisans and will vary in appearance from piece to piece.*



The Heller pedestal base is apropos for a variety of chairs, including the Arturo above and the Riley at left. *Please see pg. 83 of our Volume 1 catalog for more information on the Riley.*

SIGNATURE DESIGNS - 2158 SERIES/HELLER

Crafted from Mahogany solids and veneers in a rich white wirebrushed and rubbed, finish, hand casted Scagliola stone bases with polished aluminum insets

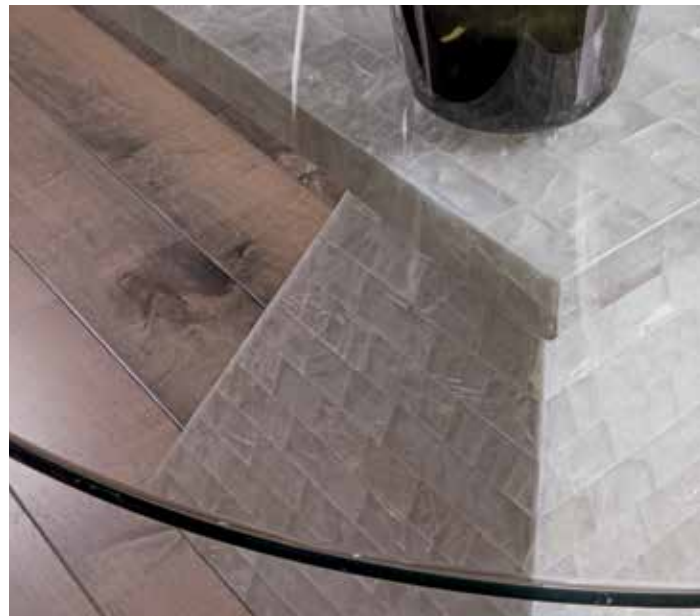


2158-870-60C Heller Round Dining Table
60 diameter x 30H in.

Also available:
2158-870-56C Heller Round Dining Table
56 diameter x 30H in



The architectural beauty of our Rainer pedestals are created with tessellated gypsum inlaid onto a reinforced iron frame. *Gypsum is a product of nature and varies greatly in appearance from tile to tile; no two pieces will be exactly alike.*



**2161-870-56C Rainer
Round Dining Table with Glass Top**
56 diameter x 29.5H in.



The Rainer's dramatic trapezoidal pedestal is clad in shimmering gypsum, and serves as a versatile design statement in a variety of configurations. It is shown above with a 60" top and opposite below with a 56" top. Shown below as a double pedestal with an 88" x 48" top. Shown here with our Riley arm chairs; please see p. 83 of our Volume I catalog for details.



**2161-870-88C Rainer
Rectangular Dining Table
with Glass Top**
88W x 48D x 29.5H in.



SIGNATURE DESIGNS - 2155 SERIES/CAPIZ PEDESTAL

Hand forged iron bases in a champagne foil finish and capiz shell tops inlaid in a starburst pattern



SIGNATURE DESIGNS - 2155 SERIES/CAPIZ PEDESTAL

Hand forged iron bases in a champagne foil finish and capiz shell tops inlaid in a starburst pattern



The 2155 Capiz Pedestal series is also available as the 2023 series in a White Crystal Stone and gold foil combination. Please see pages 147 and 174 of our Volume I catalog for more information.

2155-870C Capiz Pedestal Round Dining Table
48 diameter x 30H in.



2147-870-56C Miranda Round Dining Table with Glass Top
56 diameter x 30H in.



2147-870-88C Miranda Rectangular Dining Table with Glass Top
88W x 48D x 30.25H in.

The Miranda pedestals are versatile bases for both round and rectangular glass tops. Shown at top with a 56" top and immediately above with an 88" x 48" rectangular top.



A truly graceful silhouette, the Miranda is constructed of fiber-cast resin inlaid with a sliced vine in a seemingly endless pattern of concentric circles. Our natural vine is a product of nature and will vary in appearance from piece to piece.

SIGNATURE DESIGNS - 2104 SERIES/BEALE

Traditional designs crafted from hardwood solids and walnut veneers in a rich walnut finish with a low sheen



This petite, tasteful set combines silhouettes from different eras, with a contemporized spoon back chair married to a Scandinavian dining base, all in walnut and select hardwood solids and crown walnut veneers in a radial starburst pattern. The finish is a low sheen, showing subtle highs and lows and some pores, emphasizing the unmistakable walnut grain.



2104-880-01
Beale Low Back Side Chair
21.75W x 26D x 36.5H in.
Seat 21W x 20D x 20H in.
Standard fabric 427171
Also available in Special Order fabrics,
leathers and COM.

SIGNATURE DESIGNS - 2104 SERIES/BEALE

Traditional designs crafted from hardwood solids and walnut veneers in a rich walnut finish with a low sheen



Rich crown walnut veneers grace both the Beale dining top and the chair backs.



2104-870C
Beale Round Dining Table
50 diameter x 30H in.

SIGNATURE DESIGNS - 2104 SERIES/BEALE

Traditional designs crafted from hardwood solids and walnut veneers in a rich walnut finish with a low sheen



2104-896-01 Beale Low Back Barstool

19W x 21.5D x 34H in.
Seat 17W x 19D x 30H in.
Standard fabric 427171
Also available in Special Order fabrics, leathers and COM.

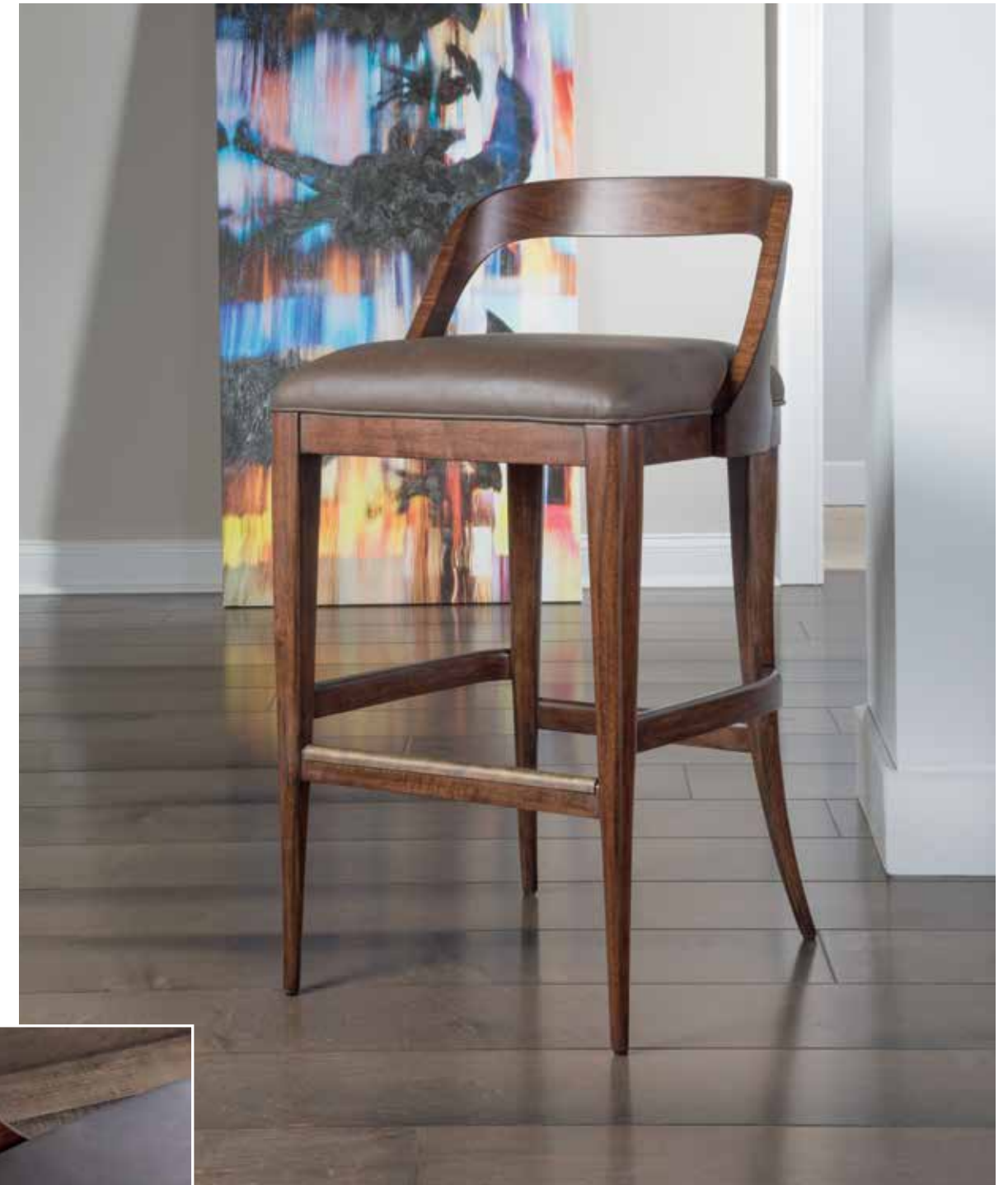


2104-895-01 Beale Low Back Counter Stool

19W x 21.5D x 28H in.
Seat 17W x 19D x 24H in.
Standard fabric 427171
Also available in Special Order fabrics, leathers and COM.

SIGNATURE DESIGNS - 2104 SERIES/BEALE

Traditional designs crafted from hardwood solids and walnut veneers in a rich walnut finish with a low sheen



The Beale stools feature a graceful, sweeping low back clad in crown walnut veneers that provides just the right amount of back support for this low-profile silhouette.

SIGNATURE DESIGNS - 2100 SERIES/VIVACE

Transitional designs crafted from mahogany solids in a rich dark brown finish



An elegant transitional silhouette featuring laser-cut fretwork out of mahogany solids and veneers, completed with a performance fabric that feels like brushed leather. This is a substantial swivel stool, but its sleek legs refine the overall appearance.



SIGNATURE DESIGNS - 2100 SERIES/VIVACE

Transitional designs crafted from mahogany solids in a rich dark brown finish



2100-895-01 Vivace Swivel Counter Stool
22.25 x 23D x 35H in.
Seat 16W x 17.75D x 24H in.
Standard fabric 427171
Also available in Special Order fabrics, leathers and COM.



2100-896-01 Vivace Swivel Barstool
22.25 x 23D x 41H in.
Seat 16W x 17.75D x 30H in.
Standard fabric 427171
Also available in Special Order fabrics, leathers and COM.

SIGNATURE DESIGNS - 2102 SERIES/VIGGO

Danish antique reproductions crafted from mahogany solids and woven abaca in a painted black finish



2102-895-01 Viggo Counter Stool
22.5W x 23.5D x 37.5H in.
Seat 21W x 18.5D x 24H in.



2102-896-01 Viggo Barstool
22.5W x 23.5D x 43.5H in.
Seat 21W x 18.5D x 30H in.

SIGNATURE DESIGNS - 2102 SERIES/VIGGO

Danish antique reproductions crafted from mahogany solids and woven abaca in a painted black finish



Our Viggo stools are Danish Mid-Century antique reproductions, in solid mahogany with a textured and worn black finish, with natural woven abaca completing an authentic appearance.



OCCASIONAL TABLES

SIGNATURE DESIGNS - OCCASIONAL TABLES

An array of striking silhouettes in unusual materials apropos for a wide variety of upholstery settings



Unusual and sometimes rare materials are utilized in this collection to achieve our unique designs. For additional information about specific materials, please see pages 254-255 of our Volume I catalog before ordering.

SIGNATURE DESIGNS - 2111 SERIES/SANGIOVESE STAINLESS

Italian silhouettes in polished stainless steel and inset tempered glass tops



Originally designed based on an Italian antique, our most popular occasional series is now available in stunning polished stainless steel combinations, with both inset glass and polished Italian silver white travertine tops.



2111-949
Sangiovese Rectangular
Cocktail Table with Glass Top
54W x 36D x 19H in.



Sangiovese is also available in four custom finishes in our Metal Designs program; please see our Volume I catalog for details.

SIGNATURE DESIGNS - 2111 SERIES/SANGIOVESE STAINLESS

Italian silhouettes in polished stainless steel and inset tempered glass tops



2111-943
Sangiovese Round
Cocktail Table with Glass Top
42 diameter x 19H in.



2111-959
Sangiovese Rectangular End
Table with Glass Top
28W x 24D x 25H in.



2111-950
Sangiovese Round
End Table with Glass Top
26 diameter x 26H in.



2111-966
Sangiovese Console with Glass Top
54.75W x 20.75D x 30.5H in.



Our stately, architectural Sangiovese étagère in polished stainless steel boasts an elegantly layered cornice and joinery details at the joints. The étagères are available with glass shelves only, and are not available in our Metal Designs program shown in Volume I.



2111-990
Sangiovese Étagère
35W x 17D x 84H in.

SIGNATURE DESIGNS - 2112 SERIES/SANGIOVESE STAINLESS

Italian silhouettes in polished stainless steel and inset silver white travertine tops



The graceful lines and bright stainless of Sangiovese are beautifully contrasted with polished Italian silver white travertine inset tops. Silver white travertine is a product of nature and will vary from piece to piece; please see pgs 254-255 of our Volume I catalog for additional information.



2112-943
Sangiovese Round
Cocktail Table
with Marble Top
42 diameter x 19H in.



2112-959
Sangiovese
Rectangular End Table
with Marble Top
28W x 24D x 25H in.



2112-950
Sangiovese Round
End Table
with Marble Top
26 diameter x 26H in.

SIGNATURE DESIGNS - 2112 SERIES/SANGIOVESE STAINLESS

Italian silhouettes in polished stainless steel and inset silver white travertine tops



Our most popular collection, Sangiovese is also available in four custom finishes in our Metal Designs program; please see pgs. 86-89 of our Volume I catalog for details.



2112-966
Sangiovese Console
with Marble Top
54.75W x 20.75D x 30.5H in.



2112-949
Sangiovese Rectangular
Cocktail Table
with Marble Top
54W x 36D x 19H in.

SIGNATURE DESIGNS - 2128 SERIES/SOIRÉE

Contemporary designs crafted from antiqued silver leaf finished metal bases, inset tempered glass tops and shelves in a wire brushed light gray finish



The Soirée collection features contemporary, geometric forms in silver-leafed iron and quartered, cerused white oak veneers in a light gray wash with just the slightest hint of light blue.



**2128-945 Soirée
Rectangular Cocktail Table**
48W x 36D x 18H in.



SIGNATURE DESIGNS - 2128 SERIES/SOIRÉE

Contemporary designs crafted from antiqued silver leaf finished metal bases, inset tempered glass tops and shelves in a wire brushed light gray finish



**2128-955 Soirée
Rectangular End Table**
26W x 22D x 26H in.



2128-967 Soirée Console
60W x 16 x 37H in.

SIGNATURE DESIGNS - 2128 SERIES/SOIRÉE

Contemporary designs crafted from antiqued silver leaf finished metal bases, inset tempered glass tops and shelves in a wire brushed light gray finish



The Soirée étagères are simple architectural forms, with risers in large complete rectangles, clad in silver leaf and framing thick white oak shelves.

SIGNATURE DESIGNS - 2128 SERIES/SOIRÉE

Contemporary designs crafted from antiqued silver leaf finished metal bases, inset tempered glass tops and shelves in a wire brushed light gray finish



2128-990 Soirée Étagère
40W x 18D x 88H in.



SIGNATURE DESIGNS - 2128 SERIES/SOIRÉE

Contemporary designs crafted from antiqued silver leaf finished metal bases, inset tempered glass tops and shelves in a wire brushed light gray finish



**2128-989 Soirée
Low Bookcase**
56W x 16D x 41H in.

SIGNATURE DESIGNS - 2128 SERIES/SOIRÉE

Contemporary designs crafted from antiqued silver leaf finished metal bases, inset tempered glass tops and shelves in a wire brushed light gray finish



The Soirée low bookcase is finished on both sides so it can float in a setting, and can be ganged together to form a dramatic long wall or room divider.

SIGNATURE DESIGNS - 2155 SERIES/CAPIZ PEDESTAL

Hand forged iron bases in a champagne foil finish, capiz shell inlay tops



Appropriate for both formal and more casual settings, the Capiz Pedestal collection offers Art Deco era bases in hand forged iron and clad in a shimmering champagne foil finish, offset by iridescent Capiz shell tops with a concentric inlay pattern. For additional information about Capiz shell and other natural materials, please see pages 254-255 of our Volume I catalog before ordering.



2155-950 Capiz Pedestal Round End Table
26 diameter x 24.5H in.

SIGNATURE DESIGNS - 2155 SERIES/CAPIZ PEDESTAL

Hand forged iron bases in a champagne foil finish, capiz shell inlay tops



The 2155 Capiz series is also available as the 2023 series in a White Crystal Stone and gold foil combination. Please see pages 147 and 174 of our Volume I catalog for more information.



2155-943 Capiz Pedestal Round Cocktail Table
36 diameter x 19H in.



SIGNATURE DESIGNS - 2156 SERIES/CUMULUS CAPIZ

Transitional iron styles in a champagne foil finish with capiz shell shelves and tempered glass tops



Our Cumulus Capiz series gets its name from the signature floating surfaces and shelves of capiz shell suspended in airy frames clad in a champagne foil finish. Please see pgs. 254-255 of our Volume I catalog for important information regarding capiz shell and other exotic materials.

SIGNATURE DESIGNS - 2156 SERIES/CUMULUS CAPIZ

Transitional iron styles in a champagne foil finish with capiz shell shelves and tempered glass tops



2156-933C Cumulus Capiz Writing Table
48W x 26D x 30H in.



The 2156 Capiz series is also available as the 2024 series in a White Crystal Stone and gold foil combination. Please see pgs. 171-173 of our Volume I catalog for more information.



2156-955C Cumulus Capiz Tier Table
24W x 16D x 24H in.

2156-958 Cumulus Capiz Triangular Tier Table
25.25W x 16D x 26H in.



SIGNATURE DESIGNS - 2156 SERIES/CUMULUS CAPIZ

Iron frames in champagne foil finish, capiz shell floating shelves, lay on glass tops



The scale of our Large Cumulus Capiz round cocktail allows the intricate radial shell starburst to truly shine, creating a visual centerpoint to any living room setting.



**2156-941C Cumulus Capiz
Large Round Cocktail Table**
50 diameter x 18.5H in.

SIGNATURE DESIGNS - 2156 SERIES/CUMULUS CAPIZ

Iron frames in champagne foil finish, capiz shell floating shelves, lay on glass tops



Our Cumulus Capiz cocktail tables are each available in two sizes, allowing for use of this beautiful material combination in a variety of room sizes.



**2156-943C Cumulus Capiz
Round Cocktail Table**
41 diameter x 18.5H in.



SIGNATURE DESIGNS - 2156 SERIES/CUMULUS CAPIZ

Iron frames in champagne foil finish, capiz shell floating shelves, lay on glass tops



Our Cumulus Capiz cocktail tables are each available in two sizes, allowing for use of this beautiful material combination in a variety of room sizes.



**2156-949C Cumulus Capiz
Large Rectangular Cocktail Table**
60W x 40D x 18.5H in.

Also Available:
**2156-945C Cumulus Capiz
Rectangular Cocktail Table**
44W x 30D x 18H in.

SIGNATURE DESIGNS - 2024 SERIES/CUMULUS

Iron frames in gold foil finish, fossilized white crystal floating shelves, lay on glass tops



The 2156 Cumulus Capiz series is also available as the 2024 series in a White Crystal Stone and gold foil combination. The new large cocktails are shown here in the 2024 combination, and please see pgs. 171-173 of our Volume I catalog for the rest of the series.



**2024-941C Cumulus
Large Round Cocktail Table**
50 diameter x 18.5H in.

**2024-949C Cumulus
Large Rectangular
Cocktail Table**
60W x 40D x 18.5H in.



SIGNATURE DESIGNS - 2145 SERIES/ARISTO

Iron bases in silver leaf finish with venetian white marble tops



Aristo features whimsical, Space Age-influenced contemporary designs based on clover-like intersecting circles, in venetian white marble standing on simple iron bases in an antiqued silver leaf. Please see pgs. 254-255 of our Volume I catalog for important information regarding stone surfaces and silver leaf finishes.



**2145-945 Aristo
Rectangular Cocktail Table**
44.5 x 26D x 18H in.

SIGNATURE DESIGNS - 2145 SERIES/ARISTO

Iron bases in silver leaf finish with venetian white marble tops



**2145-953 Aristo
Clover End Table**
26W x 24.5D x 23H in.



Solid slabs of venetian white marble are cut in multi-ellipse patterns to form the unique Aristo silhouettes.



SIGNATURE DESIGNS - 2160 SERIES/VOILA

Iron bases in a silver leaf finish with inset beveled tempered glass tops



Voila features original designs in solid and tubular iron, with legs in tapered four-sided construction that extend to an apron beneath the top rim, creating seven layered steps from the inset glass top, and clad in antiqued silver leaf.



**2160-945 Voila
Rectangular Cocktail Table**
48W x 36D x 20H in.

SIGNATURE DESIGNS - 2160 SERIES/VOILA

Iron bases in a silver leaf finish with inset beveled tempered glass tops



The sleek lines of Voila are clad in a delicate antique silver leaf finish. Please see pgs. 254-255 of our Volume I catalog for important information regarding silver leaf finishes.



**2160-953
Voila Round End Table**
26 diameter x 25.5H in.



**2160-967
Voila Console**
54W x 16D x 36H in.

SIGNATURE DESIGNS - 2158 SERIES/HELLER

Crafted from Mahogany solids and veneers in a rich white wirebrushed and hand rubbed finish based on a Swedish antique, with hand formed Scagliola stone bases accented with polished aluminum



Original designs combining Scagliola stone panels formed over an iron interior structure and offset by applied polished aluminum, and completed with a thick Mahogany slab top in a complex wire brushed finish based on a Swedish antique. Scagliola stone dates to the Italian Renaissance and was originally developed as a structural substitute for large architectural forms typically built in marble. Each piece or top is created by hand by skilled artisans and will vary in appearance from piece to piece.



**2158-945 Heller Rectangular
Cocktail Table**
60W x 36D x 18H in.

SIGNATURE DESIGNS - 2132 SERIES/CIRRO

Transitional designs with iron bases in a gun metal finish with gray Scagliola stone tops



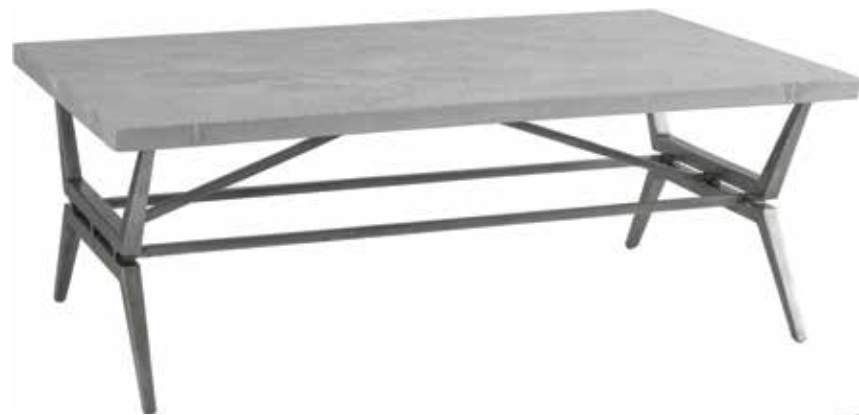
Our Cirro collection boasts thick tops in a swirly gray/white Scagliola stone standing on transitional base designs of forged iron in a gun metal finish. Each top is created by hand by skilled artisans and will vary in appearance from piece to piece.

SIGNATURE DESIGNS - 2132 SERIES/CIRRO

Transitional designs with iron bases in a gun metal finish with gray Scagliola stone tops



Scagliola stone dates to the Italian Renaissance and was originally developed as a structural substitute for large architectural forms typically built in marble. It combines selenite and a variety of marble and stone "dusts" to form a strong, beautiful surface. Each piece or top is created by hand by skilled artisans and will vary in appearance from piece to piece.



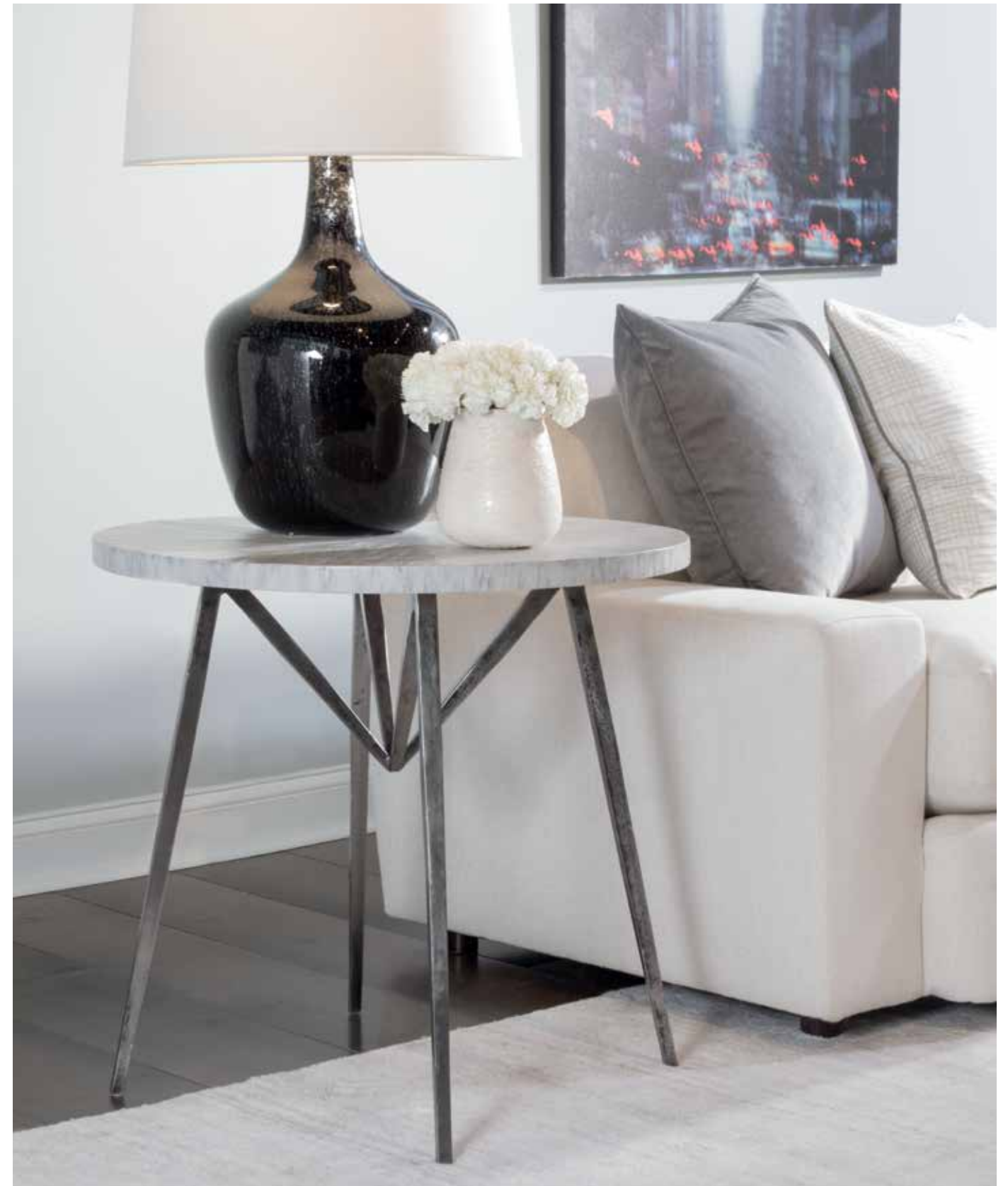
**2132-945 Cirro
Rectangular Cocktail Table**
50W x 30D x 18H in.

**2132-953 Cirro
Round End Table**
25W x 26D x 26H in.



SIGNATURE DESIGNS - 2154 SERIES/ALFIE

Crafted from mahogany solids and veneers in a rich white wirebrushed finish with bases in hand forged solid iron with an antique polished finish



The Alfie side tables juxtapose antique-based material set upon contemporary forms, with a pair of original designs to eclecticize as ends or bedside tables. The pieces are dressed in spoke-shaven mahogany tops in a complex wire brushed finish based on a Swedish antique, standing on hand-forged iron bases.

SIGNATURE DESIGNS - 2154 SERIES/ALFIE

Crafted from mahogany solids and veneers in a rich white wirebrushed finish, with bases in hand forged solid iron with an antique polished finish



Alfie's textural beauty is derived by combining spoke-shaven mahogany in a wire brushed antique white with hand forged iron in an aged polish that varies from piece to piece and shows the inherent marks of natural steel.

SIGNATURE DESIGNS - 2154 SERIES/ALFIE

Crafted from mahogany solids and veneers in a rich white wirebrushed finish, with bases in hand forged solid iron with an antique polished finish



2154-953 Alfie
Round End Table
28 diameter x 26H in.



2154-955 Alfie
Rectangular End Table
24.25W x 16D x 25H in.

Transitional designs with antiqued silver leaf finished iron bases, sand travertine tops, and tempered glass shelves



Architectural original designs with a joinery motif alternating between square and round iron bar stock, and topped in honed, warm sand travertine veneered in blocks. Sand travertine features very soft earth tones streaked with shades of gray, giving it versatility for a wide range of settings.



2135-945 Topa
Rectangular Cocktail Table
54W x 33D x 19H in.

Transitional designs with antiqued silver leaf finished iron bases, sand travertine tops, and tempered glass shelves



2135-991 Topa tag re
40W x 16D x 88H in.

Sand travertine is a product of nature and will vary in coloration and texture from piece to piece. Please see pgs. 254-255 of our Volume I catalog for important information regarding stone surfaces and silver leaf finishes.

SIGNATURE DESIGNS - 2135 SERIES/TOPA

Transitional designs with antiqued silver leaf finished iron bases, sand travertine tops, and tempered glass shelves



Sand travertine is a product of nature and will vary in coloration and texture from piece to piece. Please see pgs. 254-255 of our Volume I catalog for important information regarding stone surfaces and silver leaf finishes.



2135-967 Topa Console
66W x 16D x 34H in.



2135-955 Topa Rectangular End Table
26W x 22D x 25H in.

SIGNATURE DESIGNS - 2126 SERIES/THATCH

Contemporary designs with polished stainless steel bases and sliced rattan marquetry veneer tops in basketweave pattern



Original designs on stainless steel bases, featuring complex marquetry tops inlaid with sliced rattan pole, creating deeply three-dimensional basket weave patterns.



2126-945C Thatch Rectangular Cocktail Table
48W x 30D x 18H in.



SIGNATURE DESIGNS - 2126 SERIES/THATCH

Contemporary designs with polished stainless steel bases and sliced rattan marquetry veneer tops in basketweave pattern



**2126-955 Thatch
Three Tier Spot Table**
24W x 14D x 25H in.



**2126-958 Thatch
Nesting Tables**
Small Table: 21W x 13D x 23H in.
Large Table: 25W x 15D x 25H in.

Sliced rattan inlay is a product of nature and will vary in coloration from piece to piece. While great care is taken to blend the colorations across each top, some color variation is to be expected.

SIGNATURE DESIGNS - 2163 SERIES/INAMORATA

Rattan clusters in Alpine White resin on stainless steel bases



Unusual and whimsical contemporary designs featuring inlaid clusters of uniform slices of rattan pole in a seemingly random geometric pattern, all inset in tinted resin. The hex bunches can be arranged in a variety of configurations, or can be used as a side table in a modern upholstery setting.



**2163-952 Inamorata
Hexagonal Bunching Table**
24W x 26D x 19H in.

SIGNATURE DESIGNS - 2129 SERIES/CORTONA

Traditional designs with heavily hammered and textured iron base in a bronze foil finish with glass tops



Substantial, heavily hammered hand forged occasional in a combination of iron and aluminum that offers rustic, masculine refinement. The cocktail is topped by a 1/2-inch glass top with flat polished edge, while the end and console feature inset beveled and tempered tops. Available in finish as shown only.



2129-945C Cortona Rectangular Cocktail Table with Glass Top
54W x 38D x 19.25H in.



SIGNATURE DESIGNS - 2129 SERIES/CORTONA

Traditional designs with heavily hammered and textured iron base in a bronze foil finish with glass tops



2129-967C Cortona Console with Glass Top
53.5W x 16D x 36.5H in.



2129-955C Cortona End Table with Glass Top
22W x 26D x 26H in.

SIGNATURE DESIGNS - 2157 SERIES/MARLOWE

Walnut solids and veneers in a rich, hand-waxed finish with brass inlay



A sleek, large-scale cocktail and delicate round end with contemporary sensibilities and hints of the Art Deco era, in quartered and crotch black walnut with subtle brass inlays. These pieces are designed and finished to appear as antiques, meaning they show a medium level of distress and signs of age, with subtle bleaching across the veneers to imitate the variations of centuries of light exposure.



**2157-945C Marlowe
Rectangular Cocktail Table**
60W x 36D x 18H in



The Marlowe pieces are finished to appear as antiques. They receive a coating of English black wax across the entire surface, completing the antique effect.



**2157-953 Marlowe
Round End Table**
28 diameter x 26H in.



SIGNATURE DESIGNS - 2117 SERIES/CHIAVARI

Traditional designs crafted from walnut veneers, walnut and mahogany solids in a bleached walnut finish with ferrules and custom lost wax cast solid brass hardware in an antique finish



Original, traditional Northern Italian designs in mahogany solids and outrageous flat-cut European walnut veneers with rich figuring. These pieces are designed and finished to appear as antiques, meaning they show a medium level of distress and signs of age, with subtle bleaching across the veneers to imitate the variations of centuries of light exposure. They feature original lost wax-casted solid brass hardware and receive a coating of English black wax across the entire piece, completing the antique effect.



**2117-945 Chiavari
Rectangular Cocktail Table**
44W x 33D x 19.5H in

SIGNATURE DESIGNS - 2117 SERIES/CHIAVARI

Traditional designs crafted from walnut veneers, walnut and mahogany solids in a bleached walnut finish with ferrules and custom lost wax cast solid brass hardware in an antique finish



(end view)

The Chiavari rectangular cocktail features deep drawers unusually indexed on each end, showcasing the rich veneer work and beautiful solid brass hardware.



SIGNATURE DESIGNS - 2117 SERIES/CHIAVARI

Traditional designs crafted from walnut veneers, walnut and mahogany solids in a bleached walnut finish with ferrules and custom lost wax cast solid brass hardware in an antique finish



The Chiavari hall chest is dressed in flow-matched crown walnut veneers across the gentle concave face of the piece, and finished to appear as an antique, with areas of sun bleach and finalized with a coating of English black wax.

SIGNATURE DESIGNS - 2117 SERIES/CHIAVARI

Traditional designs crafted from walnut veneers, walnut and mahogany solids in a bleached walnut finish with ferrules and custom lost wax cast solid brass hardware in an antique finish



**2117-957 Chiavari
Square End Table**
25W x 25D x 26H in



**2117-973 Chiavari
Three Drawer Hall Chest**
44W x 16D x 38H in

SIGNATURE DESIGNS - 2117 SERIES/CHIAVARI

Traditional designs crafted from walnut veneers, walnut and mahogany solids in a bleached walnut finish. Ferrules and custom lost wax cast solid brass hardware in an antique finish



The sleek legs of the Chiavari console further emphasize the soft concave shape across the case, and are completed with solid brass ferrules.

SIGNATURE DESIGNS - 2117 SERIES/CHIAVARI

Traditional designs crafted from walnut veneers, walnut and mahogany solids in a bleached walnut finish. Ferrules and custom lost wax cast solid brass hardware in an antique finish



2117-966 Chiavari Console
48W x 16D x 36H in

MEDIA CREDENZAS AND CHESTS



Our Volume II case introductions include a wide array of special materials, including various oak veneers, raffia, olive ash burl, walnut, and veneered linen.



The Mercury media credenzas are linear door cabinets with quartered ash veneers in a gray wire-brushed ceruse, centered by recessed cameo panels in bleached olive ash burl, and completed with simple square pulls in bright stainless. For use as media consoles, buffets, or stunning stand-alone sideboards. Each features two adjustable shelves behind each door and is ported for wire management and ventilation.



2025-907 Mercury Media Credenza
59.25W x 18D x 34H in.



SIGNATURE DESIGNS - 2025 SERIES/MERCURY

Bleached olive ash burl, white oak veneers, and select hardwoods



**2025-908 Mercury
Large Media Credenza**
87.5W x 18D x 34H in.

The three-door Mercury long credenza has enough width to anchor 80-inch class televisions and is ported and vented for media.

SIGNATURE DESIGNS - 2150 SERIES/MONSTUART

White oak and select hardwood solids with quartered white oak veneers and raffia in a wire brushed cerused gray finish



A grand credenza harkening to the Mid-Century Modern era with shaped overlays, contrasting raffia back panels and wrapped in quartered white oak in a warm gray wire brushed ceruse. At 99", this piece will anchor even the 100" class of ultra-high-end monitors. Fully outfitted interior, with adjustable shelves and four interior drawers, ported for media, and with exterior grab pulls beneath the overlays.



**2150-907 Monstuart
Long Media Console/Bufet**
99W x 18D x 36H in.



SIGNATURE DESIGNS - 2149 SERIES/LOGAN

White oak and select hardwood solids and quartered white oak veneers in a white and gray wire brushed cerused finish with brass hardware clad in silver

SIGNATURE DESIGNS - 2149 SERIES/LOGAN

White oak and select hardwood solids and quartered white oak veneers in a white and gray wire brushed cerused finish with brass hardware clad in silver



SIGNATURE DESIGNS - 2149 SERIES/LOGAN

White oak and select hardwood solids and quartered white oak veneers in a white and gray wire brushed cerused finish with brass hardware clad in silver



2149-907 Logan Convertible Long Media Console/Bufet
107.5W x 17D x 30H in.
Shown with included optional tall legs



2149-907 Logan Convertible Long Media Console/Bufet
107.5W x 17D x 26H in.
Shown with included optional short legs



SIGNATURE DESIGNS - 2149 SERIES/LOGAN

White oak and select hardwood solids and quartered white oak veneers in a white and gray wire brushed cerused finish with brass hardware clad in silver



The Logan is a true showpiece, featuring a wire brushed ceruse on white oak applied over six four-way chamfered concave door panels, with brilliant silver-clad hardware imitating the quartered oak wood grain. At 107", this piece will anchor even the 100" class of ultra-high-end monitors, and ships with two sets of legs for further versatility.

The legs shown below left hold the piece to a 30" height, while the supplemental pair of legs shortens the case to 26" for more contemporary settings and the largest monitors.



SIGNATURE DESIGNS - 2140 SERIES/ZEITGEIST WHITE

Quartered white oak veneers and white oak solids in a white and gray wire brushed cerused finish



Zeitgeist is our most versatile case collection, featuring beautifully proportioned cabinets with architectural lines and repeated chamfered moldings, all dressed in a very light ceruse of white and gray on white oak solids and veneers, and completed with ring pulls in brushed stainless steel.



The deep wire brushing of straight quartered white oak veneers accentuates the textures of our white and gray ceruse.

SIGNATURE DESIGNS - 2140 SERIES/ZEITGEIST WHITE

Quartered white oak veneers and white oak solids in a white and gray wire brushed cerused finish



Our Zeitgeist collection is designed to offer a variety of long wall configurations for both bedroom and media settings. When grouped together, the three cases form a dramatic 126" wall, with the center dresser creating a breakfront effect across the group.



Dressers 54" in width are available in a standard silhouette as shown at top, and also in a media configuration with two open component cubbies. The door chest is also ported and vented for media, meaning that a standard dresser configuration can still accommodate media components.



**2140-222 Zeitgeist White
Double Dresser**
54W x 22D x 35H in.



**2140-907 Zeitgeist White
Media Console**
54W x 22D x 35H in.



Designed to stand alone or to group together in long wall systems, Zeitgeist dressers are available in two configurations, with a standard six-drawer case complemented by a media version with two vented and ported top component cubbies.



**2140-973 Zeitgeist White
Drawer Hall Chest**
36W x 20D x 35H in.



The Zeitgeist drawer chest features repeated subtle motifs, with chamfered designs on both moldings and the base plinth, and is intended as a stand-alone bedside chest or for use in long wall configurations.



**2140-974 Zeitgeist White
Hall Door Chest**
36W x 20D x 35H in.



The Zeitgeist door chest is ported and vented for media and can be used to house components in long wall configurations featuring the drawer dresser, as well as a stand-alone piece.



SIGNATURE DESIGNS - 2141 SERIES/ZEITGEIST LINEN

Versatile cases in lacquered performance fabric emulating linen and brushed nickel hardware



Zeitgeist is our most versatile case collection, featuring beautifully proportioned cabinets with architectural lines and repeated chamfered moldings, and in this case dressed in durable performance fabric with a linen-like appearance and hand. After carefully tailoring of the fabric, each piece receives a slick topcoat with a matte finish and is completed with ring pulls in brushed stainless steel.

SIGNATURE DESIGNS - 2141 SERIES/ZEITGEIST LINEN

Versatile cases in lacquered performance fabric emulating linen and brushed nickel hardware



Our Zeitgeist collection is designed to offer a variety of long wall configurations for both bedroom and media settings. When grouped together, the three cases form a dramatic 126" wall, with the center dresser creating a breakfront effect across the group.



Dressers 54" in width are available in a standard silhouette as shown at top, and also in a media configuration with two open component cubbies. The door chest is also ported and vented for media, meaning that a standard dresser configuration can still accommodate media components.



Designed to stand alone or to group together in long wall systems, Zeitgeist dressers are available in two configurations, with a standard six-drawer case complemented by a media version with two vented and ported top component cubbies.



**2141-222 Zeitgeist Linen
Double Dresser**
54W x 22D x 35H in.



**2141-907 Zeitgeist Linen
Media Console**
54W x 22D x 35H in.

SIGNATURE DESIGNS - 2141 SERIES/ZEITGEIST LINEN

Versatile cases in lacquered performance fabric emulating linen and brushed nickel hardware



The Zeitgeist drawer chest features repeated subtle motifs, with chamfered designs on both moldings and the base plinth, and is intended as a stand-alone bedside chest or for use in long wall configurations.

SIGNATURE DESIGNS - 2141 SERIES/ZEITGEIST LINEN

Versatile cases in lacquered performance fabric emulating linen and brushed nickel hardware



Zeitgeist Linen cases are completed by veneering durable performance fabric with a linen-like hand and appearance, and protecting it with a slick topcoat in a matte finish.



**2141-973 Zeitgeist Linen
Drawer Hall Chest**
36W x 20D x 35H in.



**2141-974 Zeitgeist Linen
Hall Door Chest**
36W x 20D x 35H in.



The Zeitgeist door chest is ported and vented for media and can be used to house components in long wall configurations featuring the drawer dresser, as well as a stand-alone piece.

SIGNATURE DESIGNS - 2119 SERIES/GRADIENT

Contemporary design crafted from white oak solids and quartered oak veneers in a white sandblasted finish with brushed stainless steel hardware and sled base



Modern original design in mahogany solids and quartered white oak veneers in a whitewashed ceruse, featuring drawer panels in a concentric recessed pattern of small half-round moldings. Inset hardware and sled bases in brushed stainless steel.

SIGNATURE DESIGNS - 2119 SERIES/GRADIENT

Contemporary design crafted from white oak solids and quartered oak veneers in a white sandblasted finish with brushed stainless steel hardware and sled base



The Gradient's modern pulls are recessed into the complex drawer fronts and feature a brushed stainless steel finish.



**2119-973 Gradient
Three Drawer Hall Chest**
36W x 18D x 34H in.



The Felicity Tall Chest's hardware is based on a 1930's Danish antique, combining olive ash burl and brushed stainless accents.



2115-307 Felicity Tall Chest
38W x 21D x 45H in.



The Felicity Tall Chest is a stately 1930's Scandinavian silhouette touching on the beginning of the Mid-Century Modern era, clad entirely in bleached olive ash burl and featuring burl-clad curved bar pulls and accents and inlays in brushed stainless.

SIGNATURE DESIGNS - 2115 SERIES/FELICITY

Transitional designs crafted from mahogany solids and bleached olive ash burl veneers with brushed stainless steel accents



Our Felicity Hall Chest is based on a 1930's Parisian antique, and is scaled as either a chairside chest or a small bedside table.

SIGNATURE DESIGNS - 2115 SERIES/FELICITY

Transitional designs crafted from mahogany solids and bleached olive ash burl veneers with brushed stainless steel accents



Felicity boasts bleached olive ash burl over mahogany solids, with brushed stainless steel accents.



2115-973 Felicity Hall Chest
16W x 16D x 28.75H in.



SIGNATURE DESIGNS - 2093 SERIES/DOCTRINE

Modern Jacobean designs crafted from white oak and mahogany solids, and quartered white oak veneers featuring a hand wire brushed cerused gray finish with brushed nickel hardware



2093-222 Doctrine Dresser
60 x 20D x 38H in.

SIGNATURE DESIGNS - 2093 SERIES/DOCTRINE

Modern Jacobean designs crafted from white oak and mahogany solids, and quartered white oak veneers featuring a hand wire brushed cerused gray finish with brushed nickel hardware



Our Doctrine collection boasts substantial American Mid-Century period silhouettes styled with modernized Jacobean recessed panels, in a beautiful cool gray wire brush ceruse over quartered white oak with brushed nickel hardware.

SIGNATURE DESIGNS - 2093 SERIES/DOCTRINE

Modern Jacobean designs crafted from white oak and mahogany solids, and quartered white oak veneers featuring a hand wire brushed cerused gray finish. Brushed nickel hardware



Doctrine's modernized Jacobean motifs symmetrically translate into the faces of an executive desk, with deep recessed panels framed in chamfered moldings. Each large drawer is outfitted for hanging file storage, while the center drawer face drops down for keyboard access.



2093-973 Doctrine Hall Chest
36W x 20D x 38H in.

SIGNATURE DESIGNS - 2093 SERIES/DOCTRINE

Modern Jacobean designs crafted from white oak and mahogany solids, and quartered white oak veneers featuring a hand wire brushed cerused gray finish. Brushed nickel hardware



2093-933 Doctrine Desk (front)
61W x 30D x 30H in.



SIGNATURE DESIGNS - 2124 SERIES/VAN DYCK

Modern Jacobean design crafted from white oak and mahogany solids, and quartered white oak veneers featuring a hand wire brush and a ceruse gray finish. Brushed nickel hardware. Silver white travertine top



Modernized Jacobean styling in nightstand scale, featuring a cool gray white oak ceruse and layered recessed panels offset by detailed hardware in brushed nickel, and topped with Italian silver white travertine.

SIGNATURE DESIGNS - 2124 SERIES/VAN DYCK

Modern Jacobean design crafted from white oak and mahogany solids, and quartered white oak veneers featuring a hand wire brush and a ceruse gray finish. Brushed nickel hardware. Silver white travertine top



The Van Dyck is topped with polished Italian silver white travertine, which is a product of nature and will vary in coloration from piece to piece. Please see pgs. 254-255 of our Volume I catalog for important information regarding stone surfaces.



2124-973 Van Dyck Hall Chest
27W x 17D x 30H in.

SIGNATURE DESIGNS - 2123 SERIES/MIKO

Transitional design crafted from mahogany and walnut solids and walnut veneers in a medium walnut finish



Based on an Arts & Crafts period antique with a slight hint of Asian influence, this form is made spectacular with the application of French fiddle-back walnut veneers cascading down the case. The amount of crossfire and iridescence in these veneers is remarkable, and the bleached medium wood tone is perfectly accented by the subtle solid brass inlay on the top and ferrules below. Ported and vented for media. The Miko is intended to appear as an antique and receives a final coating of English black wax to complete the effect.

SIGNATURE DESIGNS - 2123 SERIES/MIKO

Transitional design crafted from mahogany and walnut solids and walnut veneers in a medium walnut finish



2123-907
Miko Media Credenza
66W x 18D x 34H in.



SIGNATURE DESIGNS - 2116 SERIES/RIPLEY

Traditional designs crafted from walnut solids and veneers, in a bleached walnut finish with custom lost wax cast hardware in an antique finish



The Ripley is based on a Mid-Century American antique and features heavily figured bleached cathedral walnut veneers matched on the face, with lost wax solid brass hardware rendered in a sculptural organic carving descending elegantly down the front of the piece.

SIGNATURE DESIGNS - 2116 SERIES/RIPLEY

Traditional designs crafted from walnut solids and veneers, in a bleached walnut finish with custom lost wax cast hardware in an antique finish



The Ripley is intended to appear as an antique, and is completed with a coating of English black wax and boasting solid brass hardware with a worn patina.



2116-307 Ripley Tall Chest
38W x 21.5D x 45H in.



SIGNATURE DESIGNS - 2122 SERIES/PHOEBE

Traditional design crafted from parawood solids and crown elm veneers in a natural honey sandblasted finish, antique finished brass hardware



Phoebe's dramatic crown elm figuring is book matched vertically across the drawer faces, with quartered elm veneers spanning the top and sides.



**2122-973 Phoebe
Three Drawer Hall Chest**
36W x 17D x 36H in.

SIGNATURE DESIGNS - 2122 SERIES/PHOEBE

Traditional design crafted from parawood solids and crown elm veneers in a natural honey sandblasted finish, antique finished brass hardware



The Phoebe is an early 20th Century European antique reproduction, in naturally-toned crown elm veneers in a delta pattern, contrasting legs in a walnut finish, and slightly hammered solid brass hardware.

SIGNATURE DESIGNS - 2118 SERIES/BUSHIDO

Traditional design crafted from elm solids and veneers in a natural honey sandblasted finish with antique brass finished hardware



American Mid-Century antique reproduction with sensibilities from both the Arts & Crafts movement and Asian design. Constructed of elm solids and flat-cut elm veneers in a natural coloration with wire brush and antiquing, contrasted against walnut molding overlays and brass hardware.

SIGNATURE DESIGNS - 2118 SERIES/BUSHIDO

Traditional design crafted from elm solids and veneers in a natural honey sandblasted finish with antique brass finished hardware



2118-973 Bushido
Three Drawer Hall Chest
38W x 19D x 36H in.

Original designs featuring mixed media and a variety of exotic materials intended to enhance every room of the home

ACCENTS AND SPOT TABLES

For additional information about specific materials, please see pages 254-255 of our Volume I catalog.



Our Volume II additions continue our tradition of utilizing unusual and exotic materials in creating individual silhouettes designed as art.

SIGNATURE DESIGNS - 2120 SERIES/DALLIANCE

Contemporary design crafted from white oak solids and veneers in a white sandblasted finish with brushed stainless accents



A unique design intended to lend a dramatic effect to entryways and smaller spaces, in mahogany solids and heavily figured crown white oak veneers in a whitewash ceruse, all drawn at the waist with modern ormolu in brushed stainless.

SIGNATURE DESIGNS - 2120 SERIES/DALLIANCE

Contemporary design crafted from white oak solids and veneers in a white sandblasted finish with brushed stainless accents



The Dalliance's wire brushed ceruse finish coloration is designed to complement our Arturo, Gradient, Logan and Zeitgeist White Oak finishes.



2120-967 Dalliance Console
33.5W x 15D x 38H in.

SIGNATURE DESIGNS - 2121 SERIES/LILT

Contemporary design crafted from mahogany solids and oak veneers in a wire brushed natural wood tone with true parchment on top and pedestal



The Lilt's parchment top has been intentionally aged and finished to appear as an antique.

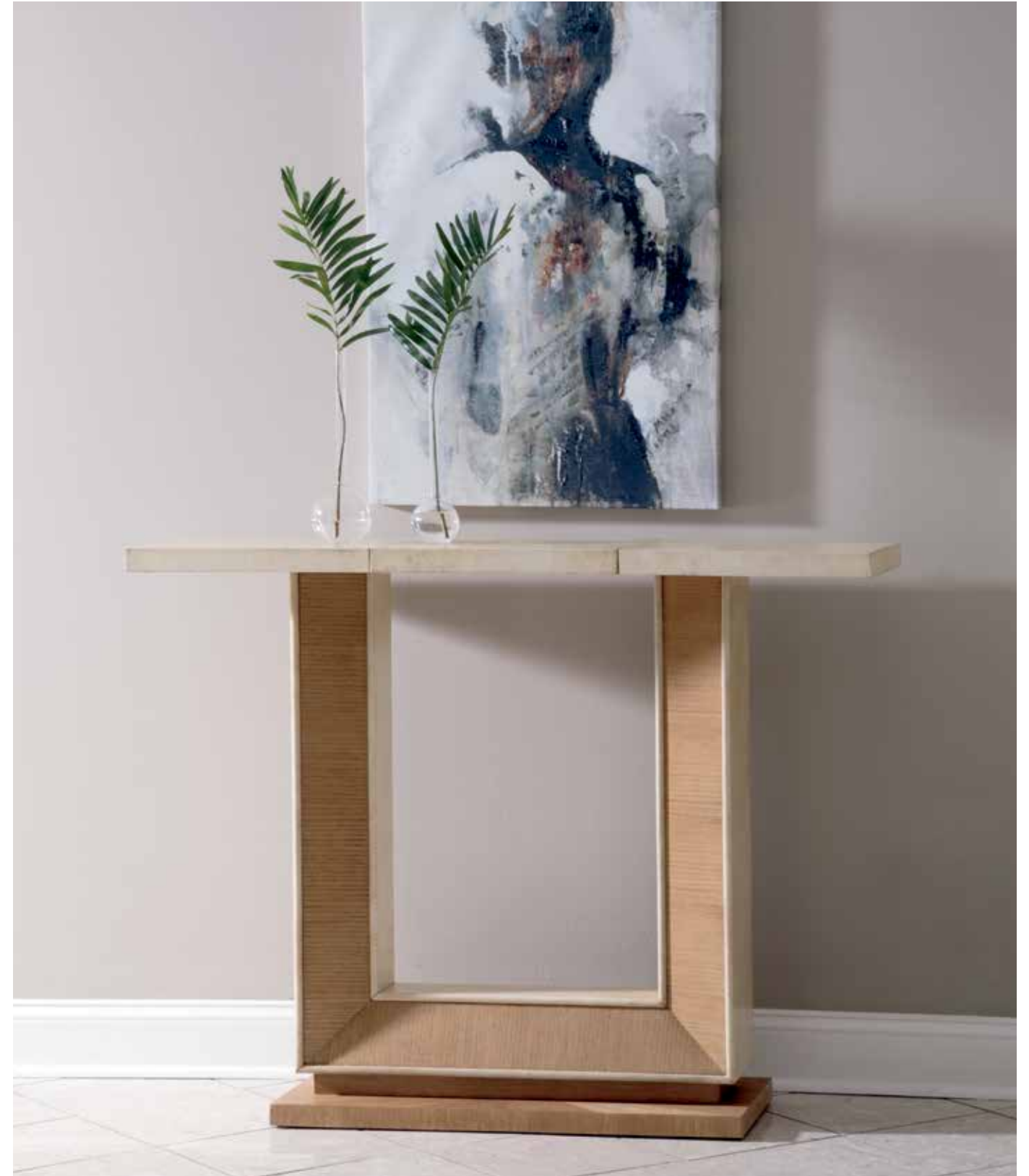


2121-967 Lilt Console
48W x 14D x 38H in.



SIGNATURE DESIGNS - 2121 SERIES/LILT

Contemporary design crafted from mahogany solids and oak veneers in a wire brushed natural wood tone with true parchment on top and pedestal



Inspired by a 1930s Parisian antique, this piece has been faithfully executed to period standards, with true parchment yellowed in an authentic aged appearance, and quartered oak insets and base finished to appear like aged natural oak solids. Like the Dalliance console on the previous pages, this piece is shallow in depth and designed for entries and hallways.



A diminutive door chest in whimsical 1960s style, dressed in a simple ivory lacquer and completed with the door inlaid in sliced turnsole vine and marquetry rattan veneer in an offset radial starburst.



2125-950 Montez Demilune Spot Table
21W x 12D x 21.25 in.

The demilune stands on a stainless steel frame and is intended as a graceful chairside drink table.

2125-973 Montez Hall Chest
18W x 14D x 28 in.





When sliced and inlaid, turnsole vine creates a heathered effect, contrasting beautifully against the rattan inlay.



**2127-951 Isabella
Rectangular Spot Table**
19W x 14D x 21H in.



Simple stainless tier table base contrasted against sliced turnsole vine in a near-black finish, with contrasting veneered rattan slices in an asymmetrical starburst pattern.

SIGNATURE DESIGNS - 2133 SERIES/DEMETRIA

Transitional design with gold leaf finished iron base and veneered abalone shell top



2133-950 Demetria Spot Table
18.25W x 12D x 23.25H in.



An elegant drinks table in Regency styling, featuring a shimmering top in veneered abalone and iron base in gold leaf.

SIGNATURE DESIGNS - 2134 SERIES/ISIDORA

Transitional designs with pewter finished iron base with turquoise top



2134-951 Isidora Turquoise Spot Table
12 diameter x 22H in.



Simple Art Nouveau iron base topped with spectacular Arizona turquoise suspended in resin.

SIGNATURE DESIGNS - 2159 SERIES/OTTO

White Scagliola stone top and pedestal on a hand shaped iron base in an antiqued polished iron base



Original design in hand-shaped iron dressed in an antique polished finish, inset with rounds of gray Scagliola stone. Abalone, turquoise and Scagliola stone are natural materials that vary in appearance from piece to piece. Please see pgs. 254-255 of our Volume I catalog for important information about exotic materials.



2159-955 Otto Round Spot Table
15W x 18.75D x 27H in.

SIGNATURE DESIGNS - 2067 SERIES/LEO

Hand-forged iron bases and gray marble tops



2067-951 Leo Spot Table
12.5W x 16.25D x 25in.



Original, refined industrial styling in our Leo combination: gray South Pacific marble atop iron in a silver-gray finish. Gray marble is a product of nature and will vary in appearance from piece to piece. *Complementing Leo Nesting Tables shown in our Volume I catalog.*

SIGNATURE DESIGNS - 2162 SERIES/JOPLIN

Polished stainless steel base with laminated pearl troca shell shelves



**2162-955 Joplin
Three Tier Spot Table**
24.25W x 14.25D x 25.25in.



Stainless tiered chairside table with shelves shimmering with sliced Troca shell inset into polished ivory resin.

SIGNATURE DESIGNS - 2164 SERIES/ARDOR

Rattan clusters in black resin



An unusual cantilevered design that appears to twist to the eye, dressed in clusters of sliced rattan inlaid into polished black resin.



**2164-952 Ardor
Side Table**
18W x 18D x 26H in.

SIGNATURE DESIGNS INDEX

Our Signature Designs feature unusual and sometimes rare materials utilized to achieve unique designs. Boasting an eclectic mix of striking original silhouettes for every room of the home, these designs utilize a range of distinctive and exotic materials resulting in stunning presentations of natural beauty and innate elegance.



SIGNATURE DESIGNS INDEX



2024-941C Cumulus Large Round Cocktail
50 inch diameter x 18.5H in.
Shown on page: 53



2024-949C Cumulus Large Rectangular Cocktail
60W x 40D x 18.5H in.
Shown on page: 53



2025-907 Mercury Media Credenza
59.25W x 18D x 34H in.
Shown on pages: 14, 83 and Back Cover



2025-908 Mercury Large Media Credenza
87.5W x 18D x 34H in.
Shown on page: 84



2067-951 Leo Spot Table
12.5W x 16.25D x 25H in.
Shown on page: 138



2093-222 Doctrine Dresser
60W x 20D x 38H in.
Shown on pages: 112 and 113



2093-933 Doctrine Desk
61W x 30D x 30H in.
Shown on pages: 114 and 115



2093-973 Doctrine Hall Chest
36W x 20D x 38H in.
Shown on page: 114



2100-895-01 Vivace Swivel Counter Stool
Standard fabric 427171
2100-895 Vivace Swivel Counter Stool
Lexington fabrics and leathers and COM
22.25W x 23D x 35H in.
Seat 16W x 17.75D x 24H in.
Shown on page: 29



2100-896-01 Vivace Swivel Barstool
Standard fabric 427171
2100-896 Vivace Swivel Barstool
Lexington fabrics and leathers and COM
22.25W x 23D x 41H in.
Seat 16W x 17.75D x 30H in.
Shown on pages: 28 and 29



2101-895-01 Arne Counter Stool
Standard fabric 430371
2101-895 Arne Counter Stool
Lexington fabrics and leathers and COM
25W x 25.5D x 36H in.
Seat 22W x 19D x 24H in.
Shown on page: 13



2101-896-01 Arne Barstool
Standard fabric 430371
2101-896 Arne Barstool
Lexington fabrics and leathers and COM
25W x 25.5D x 42H in.
Seat 22W x 19D x 30H in.
Shown on page: 13



2101-897-01 Arne Low Back Counter Stool
Standard fabric 430371
2101-897 Arne Low Back Counter Stool
Lexington fabrics and leathers and COM
21.5W x 22.5D x 28H in.
Seat 19.75W x 19D x 24H in.
Shown on page: 12



2101-898-01 Arne Low Back Barstool
Standard fabric 430371
2101-898 Arne Low Back Barstool
Lexington fabrics and leathers and COM
21.5W x 22.5D x 34H in.
Seat 19.75W x 19D x 24H in.
Shown on page: 12



2102-895-01 Viggo Counter Stool
22.5W x 23.5D x 37.5H in.
Seat 21W x 18.5D x 24H in.
Shown on page: 30



2102-896-01 Viggo Barstool
22.5W x 23.5D x 43.5H in.
Seat 21W x 18.5D x 30H in.
Shown on pages: 30 and 31



2104-870C Beale Round Dining Table
50 inch diameter x 30H in.
Shown on pages: 24 and 25



2104-880-01 Beale Low Back Side Chair
Standard fabric 427171
2104-880 Beale Low Back Side Chair
Lexington fabrics and leathers and COM
21.75W x 26D x 36.5H in.
Seat 21W x 20D x 20H in.
Shown on page: 24



2104-895-01 Beale Low Back Counter Stool
Standard fabric 427171
2104-895 Beale Low Back Counter Stool
Lexington fabrics and leathers and COM
19W x 21.5D x 28H in.
Seat 17W x 19D x 24H in.
Shown on page: 26



2104-896-01 Beale Low Back Barstool
Standard fabric 427171
2104-896 Beale Low Back Barstool
Lexington fabrics and leathers and COM
19W x 21.5D x 34H in.
Seat 17W x 19D x 30H in.
Shown on pages: 26 and 27



2105-877 Arturo Rectangular Dining Table
84W x 42D x 30H in.
Shown on pages: 8 and 9



2105-880-01 Arturo Side Chair
Standard fabric 223571
2105-880 Arturo Side Chair
Lexington fabrics and leathers and COM
22.5W x 29D x 42H in.
Seat 19W x 19D x 19H in.
Shown on pages: 8 and 9.



2105-881-01 Arturo Arm Chair
Standard fabric 223571
2105-881 Arturo Arm Chair
Lexington fabrics and leathers and COM
23.5W x 29D x 42H in.
Arm 25.5H in.
Seat 19W x 19D x 19H in.
Shown on pages: 8, 9 and 16



2105-895-01 Arturo Counter Stool
Standard fabric 223571
2105-895 Arturo Counter Stool
Lexington fabrics and leathers and COM
24W x 27D x 42H in.
Arm 30.5H in.
Seat 21W x 19D x 24H in.
Shown on page: 10



2105-896-01 Arturo Barstool
Standard fabric 223571
2105-896 Arturo Barstool
Lexington fabrics and leathers and COM
24W x 27D x 48H in.
Arm 36.5H in.
Seat 21W x 19D x 30H in.
Shown on page: 10



2111-943 Sangiovese Round Cocktail Table
with Glass Top
42 inch diameter x 19H in.
Shown on page: 35



2111-949 Sangiovese Rectangular Cocktail Table
with Glass Top
54W x 36D x 19H in.
Shown on pages: 34 and 35



2111-950 Sangiovese Round End Table
with Glass Top
26 inch diameter x 26H in.
Shown on pages: 34 and 35



2111-959 Sangiovese Rectangular End Table
with Glass Top
28W x 24D x 25H in.
Shown on page: 35



2111-966 Sangiovese Console with Glass Top
54.75W x 20.75D x 30.5H in.
Shown on page: 35



2111-990 Sangiovese étagère
35W x 17D x 84H in.
Shown on pages: 36 and 37



2112-943 Sangiovese Round Cocktail Table
with Marble Top
42 inch diameter x 19H in.
Shown on page: 38



2112-949 Sangiovese Rectangular Cocktail Table
with Marble Top
54W x 36D x 19H in.
Shown on page: 39



2112-950 Sangiovese Round End Table
with Marble Top
26 inch diameter x 26H in.
Shown on pages: 38 and 39



2112-959 Sangiovese Rectangular End Table
with Marble Top
28W x 24D x 25H in.
Shown on page: 38



2112-966 Sangiovese Console with Marble Top
54.75W x 20.75D x 30.5H in.
Shown on page: 39



2115-307 Felicity Tall Chest
38W x 21D x 45H in.
Shown on pages: 108 and 109



2115-973 Felicity Hall Chest
16W x 16D x 28.75H in.
Shown on pages: 110 and 111



2116-307 Ripley Tall Chest
38W x 21.5D x 45H in.
Shown on pages: 120 and 121



2117-945 Chiavari Rectangular Cocktail Table
44W x 33D x 19.5H in.
Shown on pages: 74 and 75



2117-957 Chiavari Square End Table
25W x 25D x 26H in.
Shown on pages: 74 and 77



2117-966 Chiavari Console
48W x 16D x 36H in.
Shown on pages: 78 and 79



2117-973 Chiavari Three Drawer Hall Chest
44W x 16D x 38H in.
Shown on pages: 74, 76 and 77



2118-973 Bushido Three Drawer Hall Chest
38W x 19D x 36H in.
Shown on pages: 124 and 125



2119-973 Gradient Three Drawer Hall Chest
36W x 18D x 34H in.
Shown on pages: Front Cover, 106 and 107



2120-967 Dalliance Console
33.5W x 15D x 38H in.
Shown on pages: 128 and 129



2121-967 Lift Console
48W x 14D x 38H in.
Shown on pages: 130 and 131



2122-973 Phoebe Three Drawer Hall Chest
36W x 17D x 36H in.
Shown on pages: 122 and 123



2123-907 Miko Media Credenza
66W x 18D x 34H in.
Shown on pages: 118 and 119



2124-973 Van Dyck Hall Chest
27W x 17D x 30H in.
Shown on pages: 116 and 117



2125-950 Montez Demilune Spot Table
21W x 12D x 21.25H in.
Shown on page: 133



2125-973 Montez Hall Chest
18W x 14D x 28H in.
Shown on pages: 132 and 133



2126-945C Thatch Rectangular Cocktail Table
48W x 30D x 18H in.
Shown on page: 67



2126-955 Thatch Three Tier Spot Table
24W x 14D x 25H in.
Shown on page: 68



2126-958 Thatch Nesting Tables
25W x 15D x 25H in.
Shown on page: 68



2127-951 Isabella Rectangular Spot Table
19W x 14D x 21H in.
Shown on pages: 134 and 135



2128-945 Soiree Rectangular Cocktail Table
48W x 36D x 18H in.
Shown on page: 40



2128-955 Soiree Rectangular End Table
26W x 22D x 26H in.
Shown on page: 41



2128-967 Soiree Console
60W x 16D x 37H in.
Shown on page: 41



2128-989 Soiree Low Bookcase
56W x 16D x 41H in.
Shown on pages: 44 and 45



2128-990 Soiree étagère
40W x 18D x 88H in.
Shown on pages: 40, 42 and 43



2129-945C Cortona Rectangular Cocktail Table
with Glass Top
54W x 38D x 19.25H in.
Shown on page: 70



2129-955C Cortona End Table with Glass Top
22W x 26D x 26H in.
Shown on page: 71



2129-967C Cortona Console with Glass Top
53.5W x 16D x 36.5H in.
Shown on page: 71



2132-945 Cirro Rectangular Cocktail Table
50W x 30D x 18H in.
Shown on pages: 59 and 60



2132-953 Cirro Round End Table
25W x 25D x 26H in.
Shown on pages: 59 and 60



2133-950 Demetria Spot Table
18.25W x 12D x 23.25H in.
Shown on page: 136



2134-951 Isidora Turquoise Spot Table
12 inch diameter x 22H in.
Shown on page: 136



2135-945 Topa Rectangular Cocktail Table
54W x 33D x 19H in.
Shown on page: 64



2135-955 Topa Rectangular End Table
26W x 22D x 25H in.
Shown on page: 66



2135-967 Topa Console
66W x 16D x 34H in.
Shown on page: 66



2135-991 Topa étagère
40W x 16D x 88H in.
Shown on pages: 64 and 65



2140-222 Zeitgeist White Double Dresser
54W x 22D x 35H in.
Shown on pages: 90, 91, 92 and 93



2140-907 Zeitgeist White Media Console
54W x 22D x 35H in.
Shown on pages: 91 and 92



2140-973 Zeitgeist White Drawer Hall Chest
36W x 20D x 35H in.
Shown on pages: 90, 91, 94 and 95



2140-974 Zeitgeist White Hall Door Chest
36W x 20D x 35H in.
Shown on pages: 90, 91, 96 and 97



2141-222 Zeitgeist Linen Double Dresser
54W x 22D x 35H in.
Shown on pages: 98, 99, 100 and 101



2141-907 Zeitgeist Linen Media Console
54W x 22D x 35H in.
Shown on pages: 99 and 101



2141-973 Zeitgeist Linen Drawer Hall Chest
36W x 20D x 35H in.
Shown on pages: 98, 99, 102 and 103



2141-974 Zeitgeist Linen Hall Door Chest
36W x 20D x 35H in.
Shown on pages: 98, 99, 104 and 105



2145-945 Aristo Rectangular Cocktail Table
44.5W x 26D x 18
Shown on pages: 54 and 55



2145-953 Aristo Clover End Table
26W x 24.5D x 23H in.
Shown on pages: 54 and 55



2146-881-01 Riley Woven Arm Chair
Standard fabric 223571
2146-881 Riley Woven Arm Chair
Lexington fabrics and leathers and COM
25W x 26.5D x 38H in.
Arm 25H in.
Seat 19W x 19D x 19H in.
Shown on pages: 11, 40, 42, 64 and 102



2147-870-56C Miranda Round Table with Glass Top
56 diameter x 30H in.
Shown on pages: 22 and 23



2147-870-88C Miranda Round Table with Glass Top
88W x 48D x 30.25H in.
Shown on page: 22



2149-907 Logan Convertible
Long Media Console/Bufferet
107.5W x 17D x 26-30H in.
Shown on pages: 86, 87, 88 and 89



2150-907 Monstuart
Long Media Console/Bufferet
99W x 18D x 36H in.
Shown on page: 85



2154-953 Alfie Round End Table
28 inch diameter x 26H in.
Shown on pages: 61 and 63



2154-955 Alfie Rectangular End Table
24.25W x 16D x 25H in.
Shown on pages: 62 and 63



2155-870C Capiz Round Dining Table
48 inch diameter x 30H in.
Shown on pages: 20 and 21



2155-943 Capiz Round Cocktail
36 inch diameter x 19H in.
Shown on pages: 46 and 47



2155-950 Capiz Round End Table
26 diameter x 24.5H in.
Shown on page: 46



2156-933C Cumulus Capiz Writing Table
48W x 26D x 30H in.
Shown on pages: 48 and 49



2156-941C Cumulus Capiz
Large Round Cocktail Table
50 inch diameter x 18.5H in.
Shown on page: 50



2156-943C Cumulus Capiz Round Cocktail Table
41 inch diameter x 18.5H in.
Shown on page: 51



2156-945C Cumulus Capiz
Rectangular Cocktail Table
44W x 30D x 18.5H in.



2156-949C Cumulus Capiz
Large Rectangular Cocktail Table
60W x 40D x 18.5H in.
Shown on page: 52



2156-955C Cumulus Capiz Tier Table
24W x 16D x 24H in.
Shown on pages: 49 and 51



2156-958 Cumulus Capiz Triangular Tier Table
25.25W x 16D x 26H in.
Shown on page: 49



2157-945C Marlowe Rectangular Cocktail Table
60W x 36D x 18H in.
Shown on page: 72



2157-953 Marlowe Round End Table
28 inch diameter x 26H in.
Shown on page: 73



2158-870-56C Heller Round Dining Table
with Glass Top
56 diameter x 30H in.



2158-870-60C Heller Round Dining Table
with Glass Top
60 diameter x 30H in.
Shown on pages: 16 and 17



2158-877C Heller Rectangular Dining Table
100W x 48D x 30H in.
Shown on pages: 14 and 15



2158-945 Heller Rectangular Cocktail Table
60W x 36D x 18H in.
Shown on page: 58





2159-955 Otto Round Spot Table
15W x 18.75D x 27H in.
Shown on page: 137



2160-945 Voila Rectangular Cocktail Table
48W x 36D x 20H in.
Shown on page: 56



2160-953 Voila Round End Table
26 inch diameter x 25.5H in.
Shown on pages: 56 and 57



2160-967 Voila Console
54W x 16D x 36H in.
Shown on page: 57



2161-870-56C Rainer Round Dining Table
with Glass Top
56 inch diameter x 29.5H in.
Shown on page: 18



2161-870-60C Rainer Round Dining Table
with Glass Top
60 inch diameter x 29.5H in.
Shown on page: 19



2161-870-88C Rainer Rectangular Dining Table
with Glass Top
88W x 48D x 30H in.
Shown on page: 19



2162-955 Joplin Three Tier Spot Table
24.25W x 14.25D x 25.25H in.
Shown on page: 138



2163-952 Inamorata Hexagonal Bunching Table
24W x 26D x 19H in.
Shown on page: 69



2164-952 Ardor Side Table
18W x 18D x 26H in.
Shown on page: 139

FURNITURE CARE:

- Avoid prolonged exposure to direct sunlight.
- Do not leave plastic or rubber materials on wood surfaces.
- Wipe up spills immediately.
- Clean with a non-silicone furniture polish, rubbing with the grain.
- Avoid common hazards such as hot dishes (use a protective pad), harsh solvents (nail polish remover, alcohol) and abrasives.

STONE AND METAL CARE:

- Maintain with regular dusting.
- Wipe spills immediately.
- Never set drinks or liquids directly on wood, metal or stone surfaces.

UPHOLSTERY CARE:

See your Artistica Upholstery dealer, visit www.artistica.com, or call 336.474.5300, ext. 2.

- Never remove cushion covers for cleaning.
- Never use bleach or any tumble method of cleaning.

CONSTRUCTION NOTE:

In order to provide our customers with the best possible quality and value, this collection includes items or components produced outside the United States.

NOTE TO FURNITURE RETAILERS:

Possession of this catalog does not constitute authority to purchase, and the furnishing of this catalog does not constitute an offer by the Company to sell any of the items contained herein. Artistica reserves the right to alter specifications or discontinue items at any time without advance notice. All price lists and catalogs remain the property of Artistica, and may not be copied or in any way duplicated without the express written consent of Artistica, and must be returned, or made available, without cost, to Artistica promptly should the relationship be terminated by either party. Failure to observe this restriction may result in termination, legal action or both.

FIND US ON THE WEB:

[facebook.com/artisticahome](https://www.facebook.com/artisticahome)
[instagram.com/artisticahome](https://www.instagram.com/artisticahome)

A division of Lexington Home Brands

artisticahome.com

©Copyright 2018 Lexington Home Brands
HPS-3.5M-2/19



ARTISTICA
HOME

— VOLUME II —



To locate a dealer in your area, visit artisticahome.com
or call 336.474.5300 ext. 2

ARTISTICA
— HOME —

artisticahome.com